

# SECRETS AND MYSTERIES

# TOP 10



We explore astonishing secrets and mysterious events around the world

**13 × 26 min. HD**

A TV  
DOCUMENTARY  
SERIES

*"The most beautiful thing we can experience is the mysterious.  
It is the source of all true art and science"*

Albert Einstein

## CONCEPT:

Human Beings! We have uncovered the secrets of DNA. We send shuttles, satellites and probes deep into Space to explore the Universe. We have dived into the depths of our Oceans. Yet, we are still surrounded by, unexplained mysteries. Wondrous, mysterious phenomena and discoveries that don't seem to fit our scientific model of the world. This Top Ten Series will explore and probe these mysterious events, manifestations and unsolved phenomena that are all around us, yet so frequently go unnoticed.

- Each episode of Top Ten Secrets and Mysteries will explore different mysterious forms and events. The Bizarre. The Unimaginable. The Terrifying. The Incomprehensible. They will all be part of our Top Ten.
- We will focus on a distinct group of mysteries. The Unsolved Mysteries. Those understood by science which nevertheless remain absolutely mysterious, the diverse and perverse.
- The Series will be factual, entertaining, visually stunning, amusing yet serious. Graphics and commentary will enhance stunning documentary footage.



### EPISODE 1: EXTRA TERRESTRIAL – THE MOST AMAZING EVIDENCE

UFO | AREA 51 | MYSTERIOUS DISAPPEARANCES | CROP CIRCLES | CLOSE ENCOUNTERS OF THIRD KIND | NATIVE NATIONS A THEIR MYTHS AND LEGENDS | ANTIENTS ARTIFACTS | WEIRD DISCOVERIES | SIGNALS FROM THE SPACE | TOP SECRET PROJECTS



### Episode 2: MYSTERIOUS CREATURES

YETI (BIG FOOT) | LOCH NESS MONSTER | CHUPACABRA | THE MOTHMAN | ELVES AND FAIRIES | LIVING DINOSAURS | ANGELS | WEREWOLFS | MONGOLIAN DEATH WORM | MOBELE-MBEMBE



### Episode 3: SACRED BUILDINGS

CHARTRES DOME (FULCANELLI) | PAYS DE CAUX | ST. VITUS CATHEDRAL | WEIDEN | YAXCHILAN RUINS | BAALBEK | SANTIAGO DE COMPOSTELA | NAZI CASTLE WEWELSBURG | GIZA PYRAMID | SHIV TEMPLE



### Episode 4: SUPERNATURAL ABILITIES

PSYCHOKINEZIS | EXTRA SENSORY PERCEPTION | TELEPATHY | CLAIRVOYANCE | PYROKINESIS | PSYCHOMETRY | PRECOGNITION | BILOCATION | POSTCOGNITION | ASTRAL PROJECTION



### Episode 5: UNEXPLAINED MESSAGES

NAZCA LINES (PERU) | PUMA PUNKU (BOLIVIA) | NATIVE PEOPLE OF KACHINA (NORTH AMERICA) | MYSTERIOUS PARTS OF OLD PAINTINGS | ANTIENT TEXTS | BAGDAD BATTERY | ANTIKYTHERY COMPUTER | CRYSTAL SKULL | SACSAYHUAMAN | CASTENEDOLA (ITALY)



### Episode 6: PARANORMAL ACTIVITIES

APPARITION OR GHOST | SENTIENT SPIRIT | POLTERGEIST AND DEMONIC ENTITIES | FILLED WITH LIGHT | LIFE CHANGING MESSAGES | VISIT BY SURREAL ENTITY | PORTAL/ VORTEX HAUNTINGS | TELEPORTATIOPN – LEVITATION





## Episode 7: MEGALITHIC STRUCTURES

CARNAC (FRANCE) | OBELISK OF ASWAN (EGYPT) | ANTEQUERA (SPAIN) | GGANTIJA (MALTA) | STONE SPHERES (COSTA RICA) | THE OLMEC HEADS (MEXICO) | YONAGUNI MONUMENT (JAPAN) | GULF OF CAMBAY (INDIA) | MOAI (EASTER ISLAND) | GOBEKLI TEPE (TURKEY)



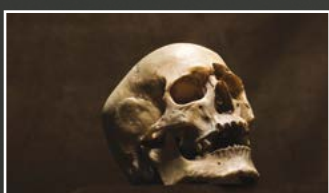
## Episode 8: PLACES WITH HEALING POWER

LOURDES (FRANCE) | STONEHENGE (G. BRITAIN) | EL SANTUARIO DO CHIMAYO (NEW MEXICO) | MACHU PICCHU (PERU) | NAAG MANDIR (FIJI ISLANDS) | THE MINERAL BATHS OF JAMAICA | HELLS GATE (NEW ZEALAND) | ONSEN (JAPAN) | LAGO DE ATITLÁN (GUATAMALA) | AMRITAPURI ASHRAM (INDIA)



## Episode 9: FAMOUS PERSONS WITH MYSTERIOUS LIFE

ALISTAIR CROWLEY | GUSTAVE MEYRINK | MONSIEUR CHOUCHANI | KASPAR HAUSER | FULCANELLI | COMTE ST GERMAIN | MAN IN THE IRON MASK | GIL PÉREZ | MADAME BLAVATSKA | NIKOLA TESLA



## Episode 10: SECRET CULTS AND ORDERS

SKULL AND BONES | FREEMASONS | ROSICRUCIANS | ORDO TEMPLIS ORIENTIS | HERMETIC ORDER OF THE GOLDEN DAWN | THE KNIGHTS TEMPLAR | THE ILLUMINATI | THE BILDERBERG GROUP | THE PRIORY OF SION | OPUS DEI



## Episode 11: REINCARNATION

BUDDHA | J. W. GOETHE | WINSTON CHURCHILL | PRINCE CHARLES | ALEXANDER SOLZENICIN | JAN HUS | JAMES LEININGER | BARBRO KARLEN | PHIL COLLINS | SALVADOR DALÍ



## Episode 12: RELICS OF THE SAINTS

SHROUD OF TURIN | VIRGIN MARY'S BREAST MILK | BUDDHA'S TOOTH | LONGIN SPEAR | CLOAK OF MUHAMMAD | SHRINE OF THE MAGI | SAINT TERESA OF AVILA'S HAND | MARY MAGDALENE'S ARM | SAINT CATHERINE OF SIENA'S HEAD | THE HOLY FORESKIN



## Episode 13: MYSTERIES OF ANCIENT CULTURES

THE MAYA | OLMECS | TOLTECS | INDUS VALLEY CIVILIZATION | CATALHOYK | CAHOKIA | ANGKOR | NIYA | EPHESUS | ATLANTIS



[www.kmplusmedia.com](http://www.kmplusmedia.com)    [www.bigmedia.tv](http://www.bigmedia.tv)

©2015